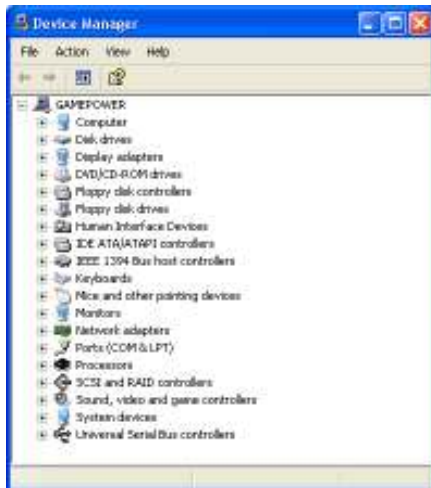


Unitech HT580 scanner Setup to work with www.EasyForYou.be

1. Open the FAQ 18 at : **UNITECH** -> <http://www.easyforyou.be/EN/helpfaq.htm#BARCODE>)
2. Download the driver from the site and unzip to a temporary folder **c:\temp\HT580** (DO NOT INSTALL THE DRIVER)
3. Connect the scanner in the USB port and when Windows detect the new hardware, give the driver location map **c:\temp\HT580** to found the driver
4. If the setup is done check in *Windows->Control Panel->Device Manager->Ports (COM & LPT)*
If the setup is successful, in the Ports, you will have a new USB Serial port COM with the **COM number** (remember this com port number for the next step)



5. Download the Tools on the **Utility link** and unzip in the **c:\temp\HT580** from the FAQ 18 **UNITECH** -> <http://www.easyforyou.be/EN/helpfaq.htm#BARCODE>)
6. COPY the file **12Comm.exe** from the **c:\temp\HT580\Tools\12Com**
PASTE in the **c:\.....\Easy For You\IMPORT**
7. Click (run) one time the file **c:\.....\Easy For You\Import\12Comm.exe**
8. The 12Comm.exe will generate a few files in the folder... Edit the **12Comm.ini** with the notepad.
 - a) Search the line COMportsettings and change the **X** with the **COM number** (look at step 4)
COMPort settings = X,38400,8,1,0
 - b) Change the variable :
File(s) on PC = HT580.TXT
9. Get the scanner HT580 and select number 2.TERMINAL and again 2.FORMCACHING
10. If you're lucky, the terminal is ready to scan a barcode and will prompt: ITEM:
Now you are ready to work ☺
Press the Scan button and scan a barcode. Type the quantity on the keyboard and press again the Scan button.
11. Put the Scanner into the **Cradle** and run the **c:\.....\Easy For You\Import\12comm.exe** (the 12Comm.exe will create a file **...import\HT580_A.txt** and delete the data from the scanner.
12. Start the software **EasyForYou** and select the document-tab you want and press SHIFT-F2 on the keyboard from the computer. EasyForYOU will start the importing the data and generate automatically the document.
Important :
 - After Pressing Shift-F2, do not work on your computer during the import
 - If you have problems to import, try to disable the UAC (in the user account), or try to disable the antivirus during this process.