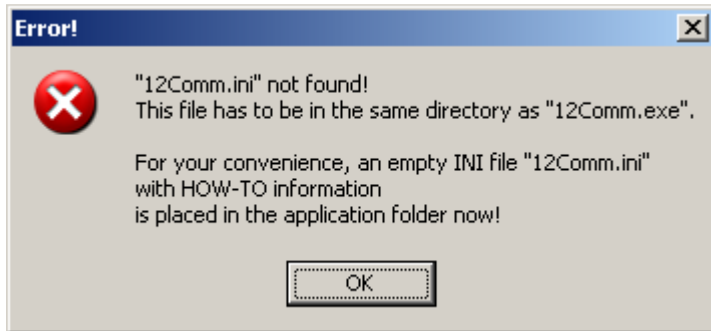


BasiQ

1. First Time Start

Execute 12Comm.exe

At First time the below notification is showed



Meanwhile a default data collect profile is generated.

The data collect profile is a file named 12Comm.INI and is located in the same folder where 12Comm.exe is located

Open 12Comm.INI with a Text Editor (NotePad)

Search for the line

COMPort settings = 1,38400,8,1,0

Change the line to reflect the proper COM port of your system, in the below example the COM port is COM6:

COMPort settings = 6,38400,8,1,0

2. Daily Data Collect

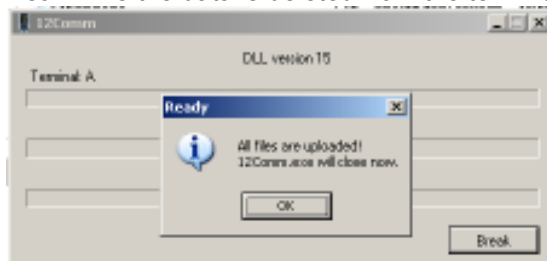
After data is collected, connect the HT580 to your system.

Execute 12Comm.exe

DATA HAS BEEN
UPLOADED PRESS
ANY KEY

When the data is copied to you system, 12Comm will report the status.

Meanwhile the data is deleted from the terminal, for reasons of data consistency.



After acknowledgement of this message 12Comm.exe will close.

12Comm.EXE will

wait for the connection of a terminal (it will wait "for-ever" if it must)

copy the collected data to your system

delete the data from the terminal

Report the status of these activities



Close itself

If previously a DATA.CSV file was present the next copy of collected data will be sequentially named as DAT1.CSV

3. View the collected data

The collected data will be available at your system as DATA^A.CSV, is located in the same folder where 12Comm.exe is located. The ^A after DATA is the address-identification of the HT580 (a terminal can have address between A~Y and 0~5)

Depending on the supported applications on your system the DATA.CSV can be double-clicked and will be opened in a Spreadsheet application (like Microsoft Excell) or a Text Editor (like Wordpad). Your System Administrator can change such file associations.

The DATA.CSV can be used to interface with any other system.